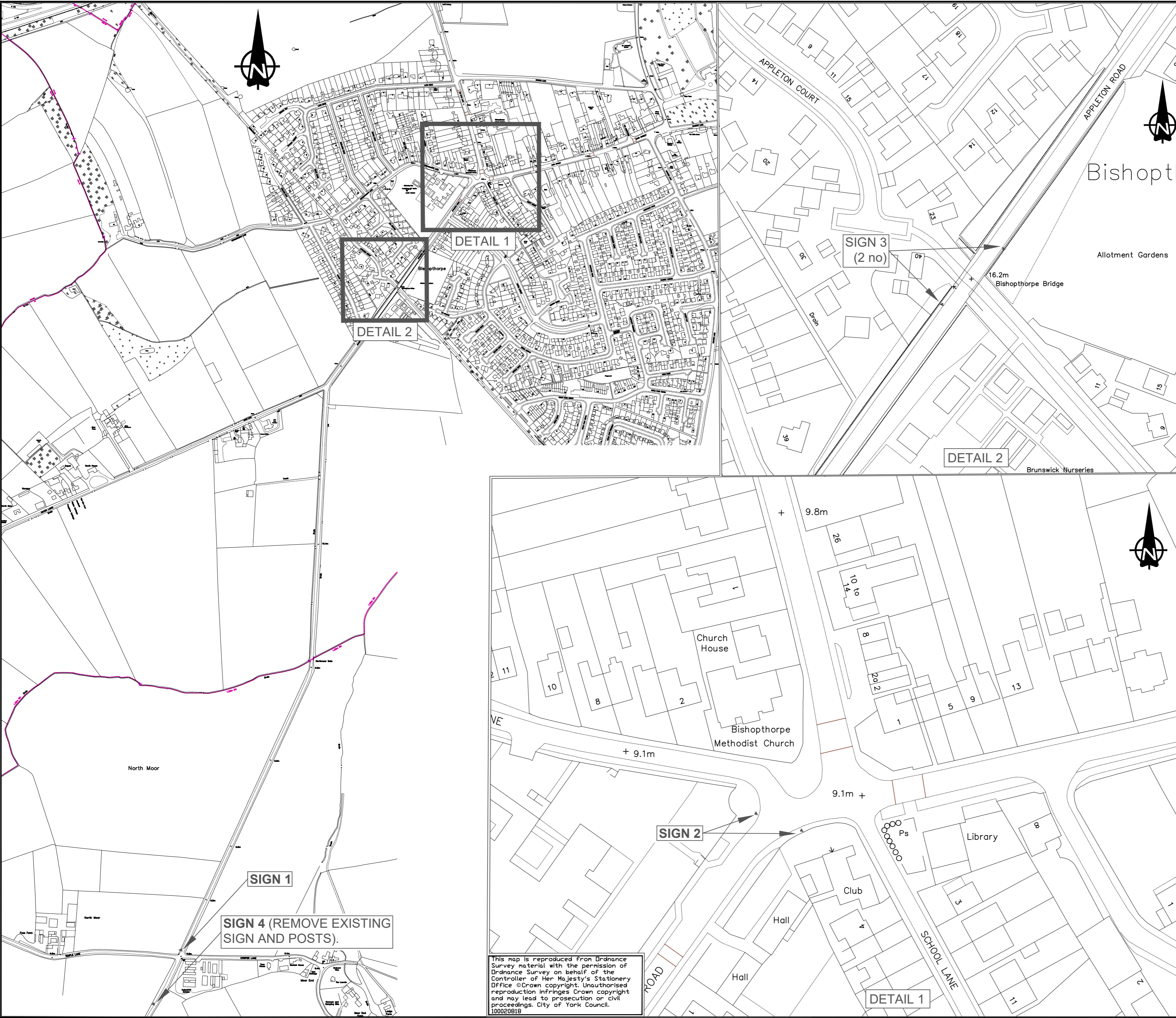


File name \\UK.WSPGROUP.COM\CENTRAL DATA\PROJECTS\70076964 - CYG BRIDGE MAINTENANCE 20-2403 WIP\BISHOPTHORPE BRIDGE (SIGNING)\3. DOCUMENTS AND DRAWINGS\GENERAL LAYOUT.DWG, printed on 10 November 2021 11:47:15, by Pringle, David



DO NOT SCALE

NOTES

1. FOR SIGN SCHEDULES SEE DRAWING NO 70076964-BBS/WSP/CoYC/SS-001.
2. EXACT LOCATION OF SIGNS TO BE AGREED ON SITE. MINIMUM SETBACK BEHIND KERB TO BE 450mm.
3. ALL SIGNS TO COMPLY WITH THE TRAFFIC SIGNS REGULATIONS AND GENERAL DIRECTIONS (TSRGD) 2016, TOGETHER WITH THE TRAFFIC SIGNS MANUALS 1,3,4 & 7.

P01	10/11/2021	DJP	FIRST ISSUE	JB	xxx
REV	DATE	BY	DESCRIPTION	CHK	APP

DRAWING STATUS: **D4 - FOR PRECUREMENT**



Dale House, Mount View, Standard Way, Northallerton
DL6 2YD, UK
wsp.com



PROJECT: **CITY of YORK COUNCIL
APPLETON RD, BISHOPTHORPE
- WEAK BRIDGE WEIGHT LIMIT SIGNING.**

TITLE: **GENERAL LAYOUT**

SCALE @ A2: NTS	CHECKED: JB	APPROVED: DMcC
PROJECT No: 70076964	DESIGNED: DJP	DATE: November 21
DRAWING No: 70076964-BBS/WSP/CoYC/GA-001		REV: P01

© WSP UK Ltd

This map is reproduced from Ordnance Survey material with the permission of Ordnance Survey on behalf of the Controller of Her Majesty's Stationery Office © Crown copyright. Unauthorised reproduction infringes Crown copyright and may lead to prosecution or civil proceedings. City of York Council. 100020818